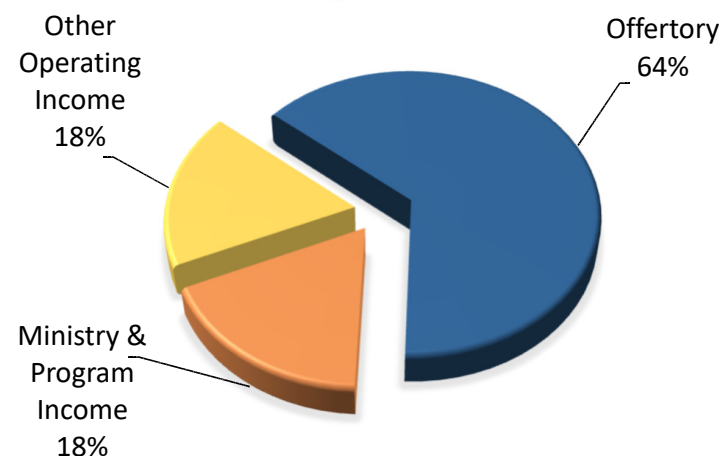


# Financial Snapshot

## 2019/2020 Fiscal Year

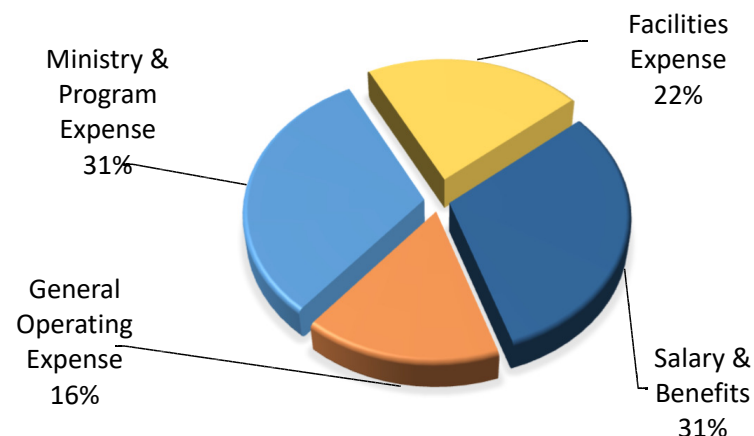
### Operating Income

Offertory	\$415,690.00
Ministry & Program Income	\$114,471.00
Other Operating Income	\$113,668.00
<b>Total Operating Income</b>	<b>\$643,829.00</b>



### Operating Expenses

Salary & Benefits	\$236,264.00
General Operating Expense	\$124,470.00
Ministry & Program Expense	\$239,261.00
Facilities Expense	\$164,024.00
<b>Total Operating Expense</b>	<b>\$764,019.00</b>
<b>Net Operating Surplus/ (Deficit)</b>	<b>-\$120,190.00</b>



# Ways to Give

## ELECTRONIC GIVING

Electronic giving is the **preferred, easy, safe and secure** way to give to our parish. To schedule a recurring electronic gift directly from your bank account or credit card, please visit our website at [www.sacredheartbayhead.com](http://www.sacredheartbayhead.com) and click on the parish giving logo. We appreciate all parishioners using this means to support our parish.

## OFFERING ENVELOPES

Offering envelopes are still provided as a traditional way to support the parish. They can be shared at Mass during the offertory, dropped off at the church office or mailed in.

## STOCK OPTIONS

Donor-advised funds are another easy way to make a contribution, with tax advantages to the parishioner. Contact the parish office for more information.

# Faith, Hope & Healing

## Church of the Sacred Heart

751 Main Ave, Bay Head, NJ | 732-899-1398 | [www.sacredheartbayhead.com](http://www.sacredheartbayhead.com)



Dear Members and Friends of Sacred Heart Church,

I don't have to tell you that this year has been one like no other! The coronavirus pandemic has changed everything, including the way we worship and gather as a community. But during times of trial such as these, Jesus Christ stands firm, and our Church's mission to love God and our neighbor has become even more essential. Now more than ever, our parish is needed to help our communities move forward in faith, hope & healing, and we can't do this important work without your support.

### Faith

Scripture tells us that *"God is our refuge and our strength, an ever-present help in distress."* (Ps 46:2). As we face the aftermath of the coronavirus pandemic, we stand strong in faith knowing that Christ is with us. And yet there are so many who do not know the Good News of Jesus Christ! There is no better time to share the Gospel message with the world. With your help, our parish can continue to bring the faith we love to others.

### Hope

The prophet Isaiah counsels, *"They that hope in the Lord will renew their strength"* (40:31). Our community has been through hardship, but we are a people of hope! By assisting those in need through our many outreach programs, we extend that hope to others. But the parish can't do it alone. With your help, we can continue to bring the hope we need to others.

### Healing

Jesus Christ is the prince of peace — the one who can calm the stormy seas. As his hands and feet, we are called to actively be Christ to one another as we embark upon a new ministry of healing within our communities. With your help, we can continue to bring the healing we crave to others.

With all of this in mind, I invite you to join our parish community by responding to our Faith, Hope & Healing Program. I ask that you please review this brochure and prayerfully consider how you and your family can help Sacred Heart Church by financially supporting our ministries, furthering our mission, and reinforcing our future.

Thank you for your generosity, prayers, and commitment to Sacred Heart Church!

In Christ,

*Rev. Joseph G. Hlubik*

Rev. Joseph G. Hlubik  
Pastor

## Parish Clergy



**Rev. Joseph Hlubik**  
Pastor

*"God is our refuge  
and our strength,  
an ever-present help  
in distress."*

**Psalm 46:2**





# *We Invite You To...*

## *Loving Our Neighbor*

Showing Christ's Love to Our Community in a Time of Need

### HAVE FAITH

Now more than ever, we should remember that God is our strength. We can turn to Him through prayer and in thanksgiving. As you pray, please remember in a special way:

- Our Neighbors & Community
- Church Leadership
- Our Local Government
- Our National Government
- Health Care Providers
- The Sick and Suffering
- Those Who Have Died



### STAY HOPEFUL

We remember that our hope is found in the Lord! As hopeful people, we want to inspire the hope of Christ in others:

- Send a cheerful email
- Spend time with loved ones
- Write a letter to a friend
- Make a meal for a neighbor
- Spend quality time in prayer



### AID HEALING

The work and ministry of our church continues, and the need is greater than ever! We rely on your support. Please continue to give generously through your offertory gifts to meet the physical and spiritual needs of our friends, neighbors, and community.



### OUTREACH

Our parish is reaching out to serve and minister to those in need. If you or someone you know needs assistance, please contact us.

### CARING FOR THE HOMEBOUND

We continue to care for those who are unable to leave their homes at this time. If you know of a family or an individual that is homebound, please let the parish know.

### PASTORAL CARE

If you or someone you know is in need of the care of a priest, we are here for you.



### WAYS TO REACH US

Phone: 732-899-1398

Office Email: [shrcbh@comcast.net](mailto:shrcbh@comcast.net)

Website: [www.sacredheartbayhead.com](http://www.sacredheartbayhead.com)